

Boyett's Whole House MERCURY Removal Filter.

Zero Waste Water. Zero Electricity. Zero Maintenance. Zero Drainage.

INSTALLATION

\$225 ON A LOOP

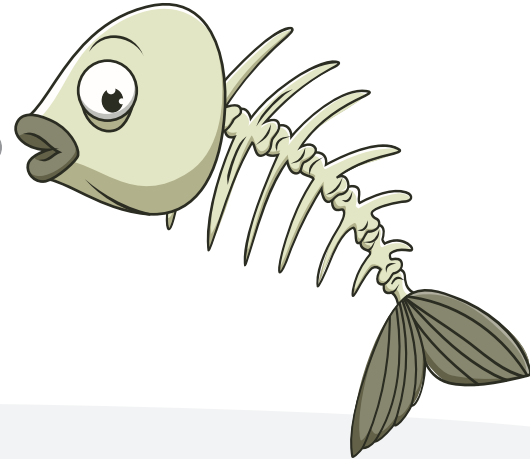
If your home isn't equipped w/a loop
we can quote you for install

Monthly Fee \$90 + tax

Boyett's will exchange equipment
every 5 years at no charge.

*DON'T WORRY
MERCURY INFESTED AZ FISH!
WE WILL SAVE THE PEOPLE FROM
AZ H2O MERCURY!*

*IT'S TOO LATE FOR
THE AZ FISH*



OUR WHOLE HOUSE MERCURY FILTER WILL REMOVE ALL THE MERCURY FROM YOUR WATER.

**THESE CITIES MAY NOT BE
CHECKING FOR MERCURY
IN YOUR WATER. MERCURY
MAY BE PRESENT IN THESE
WATER SUPPLIES:**

Phoenix
Mesa
Gilbert
Chandler
Queen Creek
Florence
San Tan Valley
Scottsdale
Cave Creek
Buckeye
Tempe

**THE REASON BOYETT'S
FAMILY WATER TREATMENT
DEVELOPED THE WHOLE
HOUSE LEAD FILTER:** We drink
water out of every faucet in our
homes. We use this water to
brush our teeth, shower and
bathe. All your faucets should be
free from mercury so you can
enjoy a happier live longer life.



**BOYETT'S FAMILY
WATER TREATMENT**

hayden@azh2o.com • www.azh2o.com
(480) 969-7251 • Cell (602) 291-4157
38 E. 5th Ave. • Mesa, AZ 85210

55 Years - Same Family - Same Location
Licensed • Bonded • Certified

Boyett's Whole House MERCURY Removal Filter.

Zero Waste Water. Zero Electricity. Zero Maintenance. Zero Drainage.

HEALTH EFFECTS OF EXPOSURES TO MERCURY IN DRINKING WATER (CONTINUED)

EFFECTS ON INFANTS AND CHILDREN

Infants in the womb can be exposed to mercury when their mothers eat fish that contain mercury. This exposure can adversely affect unborn infants' growing brains and nervous systems. Exposed to mercury while they are in the womb can have impacts to their cognitive thinking, memory, attention, language, fine motor skills, and visual spatial skills.

it has been shown that small amounts of mercury can pass from the mother's body into the developing fetus. Other health effects, such as kidney damage, certain types of tumors, and changes in the immune system, have been seen.

Neurological and behavioural disorders may be observed after ingestion or dermal exposure of mercury compounds. Symptoms include tremors, insomnia, memory loss, neuromuscular effects, headaches and cognitive and motor dysfunction.

mercury can affect the nervous system causing symptoms such as irritability, nervousness, changes in vision or hearing, and difficulties with memory.

Most of us have at least small amounts of mercury in our bodies, reflecting the widespread presence of mercury in our water supply. Mercury is a powerful neurotoxin, and people exposed to high levels may experience



adverse health effects.

Possible symptoms of mercury poisoning may include:

- Loss of peripheral vision;
- "Pins and needles" feelings, usually in the hands, feet, and around the mouth;
- Lack of coordination of movements;
- Impairment of speech, hearing, walking;
- Muscle weakness

HEALTH EFFECTS OF EXPOSURES TO MERCURY IN DRINKING WATER

There is no safe level of mercury (mercury bioaccumulates in your body) in your drinking water. The EPA has set the maximum contaminant level goal to zero for mercury in your drinking water because mercury is a toxic heavy metal that can be harmful to human health even at low exposure levels. Mercury is persistent, and it can bioaccumulate in the body over time. Boyett's family whole house mercury filter will remove the lead from your home or business - 100%.



hayden@azh2o.com • www.azh2o.com
(480) 969-7251 • Cell (602) 291-4157
38 E. 5th Ave. • Mesa, AZ 85210

55 Years - Same Family - Same Location
Licensed • Bonded • Certified

Boyett's Whole House MERCURY Removal Filter.

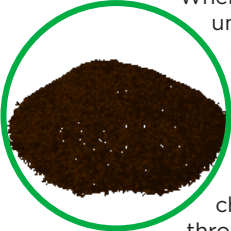
Zero Waste Water. Zero Electricity. Zero Maintenance. Zero Drainage.

OUR 2 TANK SYSTEM

TANK 1



How KDF 55 and KDF 85 Process Medium Works KDF 55 Process Medium is a high-purity copper-zinc alloy. KDF 85 granules are used to remove or reduce iron and hydrogen sulfide (rotten egg smell) from water supplies. They are also used for controlling scale, bacteria, and algae.



When used in a water treatment unit, it undergoes a chemical process known as redox. Redox is short for oxidation-reduction, which is a chemical reaction where electrons are transferred between molecules. In some cases, such as free chlorine, this transfer results in the formation of benign substances, such as chloride in this case, which then passes through the filter. In a similar way, copper, lead, mercury, and other heavy metals react to plate out onto the medium's surface effectively being removed from the water supply. KDF 55 Process Medium is so effective that it removes up to 98% of inorganic water-soluble heavy metals that are a concern to many public health officials and many consumers. In addition, KDF 55 and KDF 85 Process Medium controls microorganisms and reduces lime scale in problem areas like showers and tubs. KDF 55 and KDF 85 Process Medium even changes waterborne calcium molecules that inhibit scale buildup and improves the taste of some of your favorite beverages. Ahead Of The Carbon, Ahead Of The Game KDF 55 and KDF 85 Process Medium is the ideal complement to GAC. Because GAC removes chlorine by surface chemistry, it actually fosters bacterial growth. But, unlike carbon, KDF 55 and KDF 85 Process Medium is truly bacteriostatic. The electrolytic field created by the redox process is an environment deadly to some microorganisms; it also creates hydroxyl radicals and hydrogen peroxides that interfere with the ability of some other microorganisms to function. KDF 85 process media converts hydrogen sulfide to insoluble sulfide (it eliminates any bad smell from your water).

TANK 2



Granular activated carbon is made from raw organic materials that are high in carbon.

Heat is used to activate the surface area of the carbon, removing certain chemicals dissolved in water as they pass through a filter containing granular activated carbon. This makes your water taste better and protects your skin from the high chlorine levels in AZ h2o.

GRANULAR ACTIVATED CARBON (GAC) FACT SHEET

The use of granular activated carbon (GAC) for water purification became common around the start of the 20th century (1906) when the "activation" process was applied to charcoal (which had been used for centuries). Thermal activation of charcoal greatly improves its pore volume, surface area and structure making it a superb workhorse for water treatment. The Adsorption Concept A clean carbon surface is oleophilic, meaning "oil loving" and the opposite of hydrophilic or "water loving". It has a strong attraction for organic compounds and other non-polar contaminants and adsorbs them onto the carbon surface where they are held by van der Waals forces. Adsorption is the primary mechanism by which GAC works and the primary reason it is widely used to reduce undesirable taste, odor and color and to improve the safety of drinking water by also effectively removing common disinfection byproducts (THMs), organic contaminants like chlorinated solvents and other industrial pollutants, pesticides, and select heavy metals such as lead and mercury...

De-chlorination A second very important property of GAC is its ability to catalytically reduce chlorine from an oxidizer (NaOCl) to a salt (NaCl) by taking away the reactive oxygen.

If this media is not exchanged every five years - microbiological contamination of the drinking water may occur.

We exchange both tanks every five years at no charge.



Boyett's Family
WATER TREATMENT

hayden@azh2o.com • www.azh2o.com
(480) 969-7251 • Cell (602) 291-4157
38 E. 5th Ave. • Mesa, AZ 85210

55 Years - Same Family - Same Location
Licensed • Bonded • Certified

Boyett's Whole House MERCURY Removal Filter.

Zero Waste Water. Zero Electricity. Zero Maintenance. Zero Drainage.

WHY SHOULD YOU RENT THIS UNIT RATHER THAN BUY IT: By renting this unit you will save \$5,200 over 5 years (every 5 years my family exchanges your water equipment at no charge).

The mercury removal filter media must be replaced every 5 years to remain effective.

Our second tank contains granular activated carbon 'to remove other bad tastes, odors and chlorine'. If this filter media is not changed every five years - this will cause microbiological contamination of your drinking water.

Our equipment is electronically date coded with an electronic tickler process developed by a Nevada computer company (Nevada, Iowa) that is tenaciously followed by the Boyett's family four step follow up process to make sure this free exchange occurs.

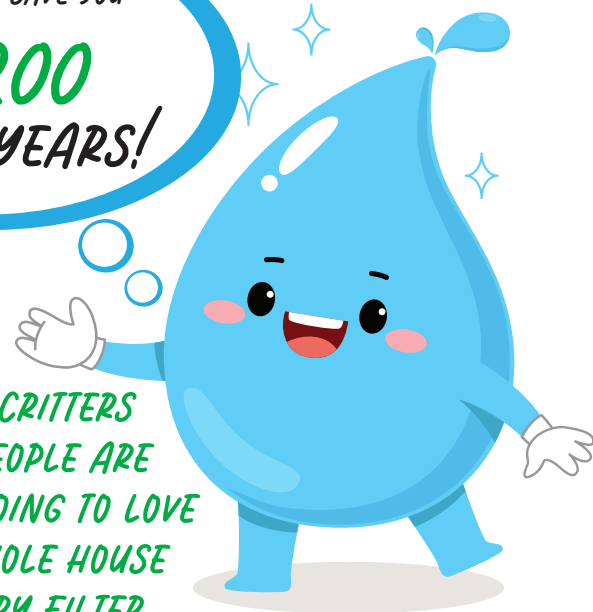
The added advantage to utilizing this method of whole house water treatment:

- This product contains water softening qualities
- This product is easy to install at the point of entry of your home (to capture all your water).
- You can water your plants and vegetation with this water.
- This product will make your skin feel better and make your water taste better (and healthier to drink).

RENTING WILL SAVE YOU

\$5,200
OVER 5 YEARS!

*YOUR CRITTERS
AND PEOPLE ARE
REALLY GOING TO LOVE
THIS WHOLE HOUSE
MERCURY FILTER.*



PROUDLY MADE IN MESA, AZ BY



**BOYETT'S FAMILY
WATER TREATMENT**

PLEASE CALL US TO SCHEDULE A CONSULTATION OR INSTALLATION.

RESPECTFULLY, HAYDEN BOYETT HAYDEN@AZH2O.COM

OFFICE: (480) 969-7251 CELL: (602) 291-4157 - TEXT TO CHAT

www.azh2o.com

38 E. 5th Ave. • Mesa, AZ 85210

55 Years - Same Family - Same Location

Licensed • Bonded • Certified

SOURCES:

<https://www.lenntech.com/kdf-filter-media.htm#:~:text=KDF%20process%20media%20work%20to%20bacteria%2C%20algae%2C%20and%20fungi.>
<https://pubmed.ncbi.nlm.nih.gov/8740859/>
<https://www.tempe.gov/home/showdocument?id=96478>
<https://legend-group.com/>

-Does Your Water Contain an Unsafe Level of Mercury? Trending Towns <<https://trendingtowns.com/does-your-water-contain-an-unsafe-level-of-mercury/>>
ODrinking Water in Arizona | ADEQ Arizona Department of Environmental Quality (azdeq.gov)

OKDF Process Media for Chlorine, Algae, Iron and Bacteria removal (kdfft.com) <<https://www.kdfft.com/products.htm>>

OKDF 55 (waterfilteradvisor.com) <<https://www.waterfilteradvisor.com/filtration-media/kdf-55/>>

<https://www.who.int/news-room/fact-sheets/detail/mercury-and-health#:~:text=Neurological%20and%20behavioural%20disorders%20may,and%20cognitive%20and%20motor%20dysfunction.>

<https://www.cdc.gov/niosh/topics/skin/default.html#:~:text=Dermal%20absorption%20happens%20when%20a%20include%20pesticides%20and%20organic%20solvents.>
<https://www.hopewelltpw.org/DocumentCenter/View/114/Facts---Mercury-in-Drinking-Water-PDF>

<https://www.epa.gov/mercury/health-effects-exposures-mercury>

<https://www.cdc.gov/mmwr/preview/mmwrhtml/mm5343a5.htm>

<https://www.epa.gov/mercury/what-epa-doing-reduce-mercury-pollution-and-exposures-mercury#:~:text=2015%20final%20rule-,In%20your%20drinking%20water,mg%2F%20L%20or%202%20ppb.>

<https://www.phoenixmag.com/2022/11/03/raising-a-stink/>

<https://www.kdfft.com/pdfs/KDFProcessMedia.pdf>

